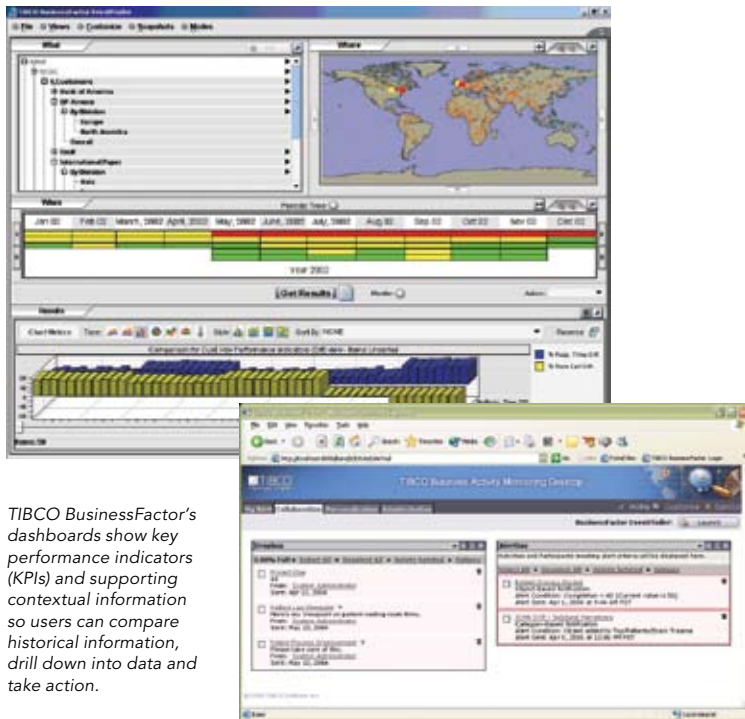


# TIBCO BusinessFactor

A current and complete understanding of operational performance and developing situations is a critical part of an organization's ability to take immediate action to fix problems and capitalize on opportunities. Unfortunately, most organizations manage their operations and make decisions based on old data—reviewing what has already happened and (hopefully) fixing things for next time.

TIBCO BusinessFactor™ software enables the development and delivery of performance visibility and business activity monitoring (BAM) solutions that let users quickly understand current operational performance in context of business objectives, past performance and related activities. It collects and correlates data from across the organization, presents information via customizable interactive dashboards, and alerts users when thresholds are exceeded. By performing these functions, the software helps users more quickly and accurately identify and address risks and opportunities.



TIBCO BusinessFactor's dashboards show key performance indicators (KPIs) and supporting contextual information so users can compare historical information, drill down into data and take action.

Collaboration features provide action item creation and tracking to ensure timely resolution.

## AT A GLANCE

**TIBCO BusinessFactor** enables the creation of dashboards that let users observe, analyze and act on operational metrics to fix problems and optimize performance.

## BENEFITS

- Increases business agility by reducing the time it takes for users to identify and initiate response to trends and developing situations.
- Improves resource allocation by immediately identifying exactly when and where imbalances between resource capacity and demand occur.
- Minimizes risk exposure with real-time monitoring of transactions and processes.
- Improves decision making with personalization features and a collaborative framework that enables users to share business context, and execute or assign appropriate actions.

## ATTRIBUTES & CAPABILITIES

### Code-Free Design and Service-Oriented Deployment

TIBCO BusinessFactor provides a number of tools that can significantly reduce risk and accelerate deployment.

- **Design:** TIBCO Designer™ software enables the fast and iterative modeling of operational scenarios. Features such as declarative aggregations which eliminate the need to code in SQL, WYSIWYG design and rapid validation tools can reduce development efforts by up to 70%.
- **Testing:** Pre-deployment testing highlights design issues, bottlenecks and performance problems before deployments go into production.
- **Deployment:** TIBCO Administrator™ software is a browser-based interface for monitoring, managing and securing deployments. It supports service-oriented deployment which lowers risk, simplifies manageability and facilitates a best-fit architecture that adapts over time to increase extensibility and scalability.

### Scalable Execution

TIBCO BusinessFactor supports the collection, correlation and delivery of a virtually unlimited amount of information.

- Distributed event capture services, based on TIBCO's industry-leading TIBCO BusinessWorks™ integration software, lets BusinessFactor collect data and events from any source, including applications, databases and business processes.
- TIBCO BusinessFactor Aggregator uses a powerful in-memory database to collect events using 10 times fewer instructions than traditional disk-based approaches, resulting in unprecedented speed for the rollup of events.

- TIBCO BusinessFactor Server, based on open and scalable application server technology, stores activity models and notification rules, and initiates the automatic delivery of information and alerts.

### Dashboards, Personalization and Collaboration

TIBCO BusinessFactor gives users the ability to work with information and appropriate personnel to identify and initiate appropriate responses to situations.

- The BAM Desktop lets users create a custom and collaborative view of information with facilities for alerts, threshold management and snapshots for sharing information across the organization.
- TIBCO BusinessFactor EventFinder, a dynamic ad-hoc query environment, gives users the ability to review and compare data at any level of granularity of type, location or timeframe.

### Sample Applications

TIBCO BusinessFactor can help organizations eliminate operational inefficiencies and maximize profitability in a number of ways.

- **Resource Optimization:** Shorten production cycle times and provide faster customer service by adjusting resources in response to business process bottlenecks.
- **Operational Reliability:** Reduce downtime and failure rates in machines, applications and processes with timely notification of discrepancies and errors.
- **Operational Performance Management:** Ensure consistent execution of a process by monitoring its behavior while in progress.
- **Service Quality Control:** Prevent shortfalls and unwanted overruns in service delivery through early detection of KPI trends.

### PLATFORM, STANDARDS AND SECURITY

- Operating Systems: HP-UX (RISC and Itanium), Solaris, Windows
- Databases: Oracle, SQL Server
- Application Servers: Tomcat, WebLogic
- Messaging: JMS, SOAP, TIBCO
- LDAP: Microsoft Active Directory, Novell eDirectory, Sun ONE Directory
- Portlet Creation: JSR-168

**TIBCO Software Inc.** (NASDAQ: TIBX) is the leading independent business integration software company and a leading enabler of real-time business, helping companies become more cost-effective, more agile and more efficient. TIBCO has delivered the value of real-time business, what TIBCO calls The Power of Now®, to thousands of customers around the world and in a wide variety of industries.

©2006, TIBCO Software Inc. All rights reserved. TIBCO, the TIBCO logo, The Power of Now, TIBCO Software, TIBCO Administrator, TIBCO BusinessFactor, TIBCO BusinessWorks and TIBCO Designer are trademarks or registered trademarks of TIBCO Software Inc. in the United States and/or other countries. All other product and company names and marks mentioned in this document are the property of their respective owners and are mentioned for identification purposes only. 01/06



[www.tibco.com](http://www.tibco.com)

Global Headquarters  
3303 Hillview Avenue  
Palo Alto, CA 94304

**Tel:** +1 650-846-1000

+1 800-420-8450

**Fax:** +1 650-846-1005