

TIBCO BusinessWorks COBOL Copybook Plug-in

Most organizations rely on a complex mix of off-the-shelf and custom applications, databases, and technologies. Optimizing the reuse and coordination of these IT assets and information sources helps organizations simultaneously reduce time-to-market and IT costs, but this data is not always easy to access or to integrate.

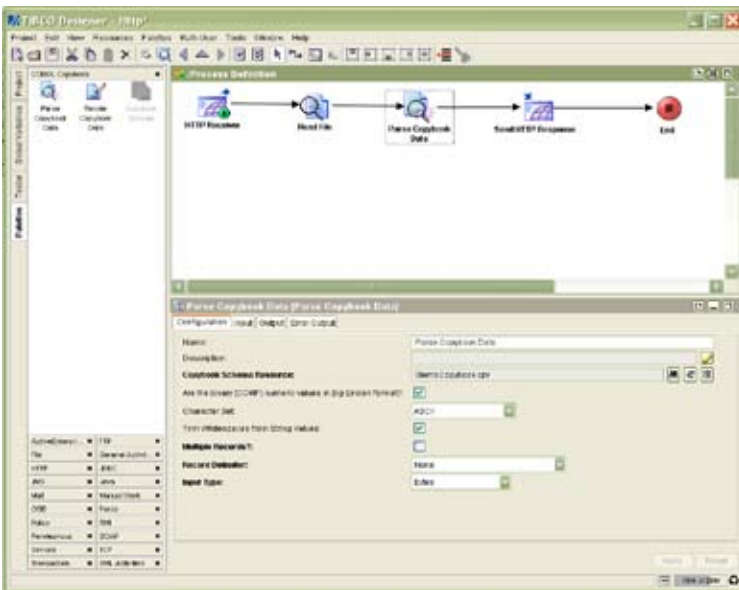
TIBCO BusinessWorks™ COBOL Copybook Plug-in enables IT organizations to make mainframe COBOL and other applications active participants in business processes as part of a service-oriented architecture (SOA). The plug-in provides a simple approach to converting structured data representations such as a CICS COMMAREA or any other such COBOL copybook layouts into a data representation that can be reused within complex, cross-platform integration scenarios. One of its main integration uses is to centralize and simplify the interchange of mainframe data stored in EBCDIC format with other applications that store their data in ASCII or UTF-8 format.

AT A GLANCE

TIBCO BusinessWorks COBOL Copybook Plug-in helps IT organizations integrate COBOL and other mainframe applications into their TIBCO-based IT infrastructure, business processes, and SOA.

BENEFITS

- Provides flexibility when incorporating COBOL and other mainframe applications into your IT infrastructure as it unlocks these applications for active sharing with other enterprise resources, opening up potentially disparate data and application sources to other processes.
- Enables developers to readily map and process data conforming to a COBOL copybook layout. The mapping is bi-directional, and performance and security requirements are maintained.
- Supports complex processing in the same process definition, thus simplifying message traffic.
- Provides a quick return on investment as it is a standard BusinessWorks plug-in so there is a minimal learning curve for developers.



TIBCO BusinessWorks COBOL Copybook Plug-in enables the rapid integration of COBOL Copybook data into BusinessWorks processes.



ATTRIBUTES & CAPABILITIES

This plug-in supports both the parsing and rendering of COBOL Copybook data. It allows for interpretation and creation of memory-aligned data based on a specified COBOL copybook definition.

The plug-in has the following attributes and capabilities:

- Accessed from the COBOL Copybook palette from within TIBCO BusinessWorks™.
- Uses standard BusinessWorks drag and drop user interface for process definition.
- Converts a COBOL Copybook into an XML schema definition that is then used to:
 - parse structured data into an XML document. The data can then be used by BusinessWorks activities for processing.
 - render data produced by a BusinessWorks activity into a structured data format. The data can then be passed to other applications.
- Different data description entries can describe the same storage area. This is commonly known as storage redefines.
- When reading data from a file, parsing a large number of records can be accommodated by reading a preset number of records before moving onto the next set. This approach limits machine resource consumption.
- Communications with an application is usually via a messaging service such as JMS, for example, TIBCO Enterprise Message Service™, or via TIBCO Rendezvous®.
- COBOL Copybook data can also be retrieved or sent using a file.

Additionally:

- Can define the characters set to be used during run-time mapping: ASCII, EBCDIC, Unicode, code page, etc.
- Can parse and render data such as packed and zoned decimal.
- Has the ability to specify that binary numeric values are big endian.
- Test parsing button is provided.

TIBCO Software Inc. (NASDAQ: TIBX) is a leading independent business integration software company and a leading enabler of real-time business, helping companies become more cost-effective, more agile and more efficient. TIBCO has delivered the value of real-time business, what TIBCO calls The Power of Now®, to thousands of customers around the world and in a wide variety of industries.

©2008, TIBCO Software Inc. All rights reserved. TIBCO, the TIBCO logo, The Power of Now, TIBCO Software, TIBCO BusinessWorks, TIBCO Enterprise Message Service, and TIBCO Rendezvous are trademarks or registered trademarks of TIBCO Software Inc. in the United States and/or other countries. All other product and company names and marks mentioned in this document are the property of their respective owners and are mentioned for identification purposes only. 19015.0



www.tibco.com

Global Headquarters
3303 Hillview Avenue
Palo Alto, CA 94304

Tel: +1 650-846-1000
+1 800-420-8450

Fax: +1 650-846-1005